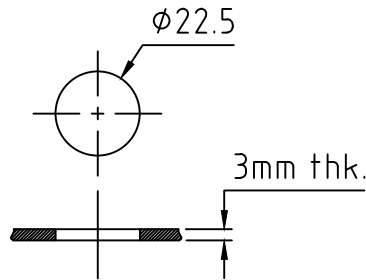


MACHINING DEVIATIONS FOR LINEAR DIMENSIONS	RANGE	0-6	6-30	30-120	120-315	315-1000	1000-2000	2000-4000	ABOVE 4000
	TOLERANCE	±0.1	±0.2	±0.3	±0.5	±0.8	±1.2	±2	±3
FOR DIMENSIONAL TOLERANCES OF SHEET METAL PARTS AND WELDED STRUCTURES, REFER STD. RD-227									
UNSPECIFIED TOLERANCE FOR LINEAR AND ANGULAR DIMENSIONS REF. IS 2102 (PT-1) (MEDIUM)									
VALUES OF SURFACE TEXTURE SHALL BE AS PER COMPANY STD DS.1012.C.						PROTO/PILOT/PRODUCTION			
QUALITY OF WELD JOINTS REF, RD-230 MEDIUM									

SPECIFICATION:

DESCRIPTION	: PUSH BUTTON
ACTION	: MOMENTARY (SPRING RETURN)
TYPE OF CONTACT	: 1 NORMALLY OPEN (NO)
ILLUMINATION	: NON ILLUMINATED
OPERATING VOLTAGE	: 24Vdc
SWITCHING CURRENT	: 10A (MAX)
DEGREE OF PROTECTION	: IP65
OPERATING TEMPERATURE	: - 25DegC to + 70DegC
COLOR	: RED
LIFE OF OPERATING CYCLES	: 1 MILLION ACTUATIONS (Min)
CONNECTIONS - TERMINALS	: SCREW CLAMP TERMINALS / PIN TERMINALS
DEVICE PRESENTATION	: MONOLITHIC PRODUCT
<u>SOURCE :</u>	
MAKE	: SCHNEIDER ELECTRIC
MODEL	: XB7NA45

[illegible]